

# BUTTERFLY VALVES



**3500 BUTTERFLY VALVE WAFER**  
**DN40 → DN600**  
**PN 6-10-16**

**Design**  
 EN 593

**End Connection**  
 WAFER - EN 1092-1 / ISO 7005-1

**Body**  
 GG25 CAST IRON  
 GGG50 DUCTILE IRON

**Disc**  
 3500 - AISI 304  
 3550 - DUCTILE IRON+NICKEL  
 3560 - AISI 316

**Stem**  
 AISI 420 / 304 / 316

**Sealing**  
 EPDM / NBR / VITON

**Coating**  
 ELECTROSTATIC POWDER EPOXY



**3600 BUTTERFLY VALVE LUG**  
**DN40 → DN600**  
**PN 16**

**Design**  
 EN 593

**End Connection**  
 LUG EN 1092-2 / ISO 7005-2

**Body**  
 GG25 CAST IRON  
 GGG50 DUCTILE IRON

**Disc**  
 3600 - AISI 304  
 3650 - DUCTILE IRON+NICKEL  
 3660 - AISI 316

**Stem**  
 AISI 420 / 304 / 316

**Sealing**  
 EPDM / NBR / VITON

**Coating**  
 ELECTROSTATIC POWDER EPOXY



**3800U SHORT TYPE FLANGED BUTTERFLY VALVE**  
**DN40 → DN1200**  
**PN 10-16**

**Design**  
 EN 593

**End Connection**  
 FLANGED EN 1092-2/ISO 7005-2

**Body**  
 GGG40/50 DUCTILE IRON

**Face to Face**  
 EN 558 SERIES 20

**Disc**  
 AISI 304 / 316

**Stem**  
 AISI 420

**Sealing**  
 EPDM / NBR / VITON

**Coating**  
 ELECTROSTATIC POWDER EPOXY



**3800 BUTTERFLY VALVE DOUBLE ECCENTRIC**  
**DN100 → DN2000**  
**PN 10-16-25**

**Design**  
 EN 593

**End Connection**  
 FLANGED EN 1092-2/ISO 7005-2

**Body**  
 GGG40/50 DUCTILE IRON

**Disc**  
 GGG40/50 DUCTILE IRON

**Stem**  
 AISI 420 / 304 / 316

**Sealing**  
 EPDM / NBR / VITON

**Coating**  
 THERMOPLASTIC POWDER EPOXY  
 ELECTROSTATIC POWDER EPOXY



**3800E BUTTERFLY VALVE ELECTRIC ACTUATED**  
**DN100 → DN2000**  
**PN 10-16-25**

**Design**  
 EN 593

**End Connection**  
 FLANGED EN 1092-2/ISO 7005-2

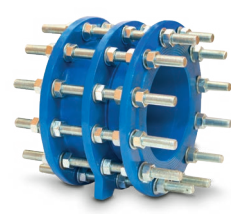
**Body**  
 GGG40/50 DUCTILE IRON

**Disc**  
 GGG40/50 DUCTILE IRON

**Stem**  
 AISI 420 / 304 / 316

**Sealing**  
 EPDM / NBR / VITON

**Coating**  
 THERMOPLASTIC POWDER EPOXY  
 ELECTROSTATIC POWDER EPOXY



**3900 DISMANTLING JOINT**  
**DN50 → DN2000**  
**PN 10-16-25**

**End Connection**  
 FLANGED EN 1092-2/ISO 7005-2

**Test**  
 EN 12266-1

**Body**  
 GGG50 DUCTILE IRON

**Studs / Nuts**  
 8.8 GALVANISED STEEL  
 AISI 420/304/316

**Sealing**  
 EPDM

**Coating**  
 ELECTROSTATIC POWDER EPOXY



# GLOBE VALVES - STRAINERS



**2100  
GLOBE VALVE**

**DN15 → DN300  
PN 16**

**Design**  
EN 13789

**End Connection**  
FLANGED EN 1092-2 / ISO 7005-2

**Body**  
GG25 CAST IRON

**Disc**  
AISI 304

**Kumanda Mili**  
AISI 420

**Sealing**  
GRAPHITE

**Coating**  
INDUSTRIAL EPOXY



**2130  
GLOBE VALVE  
BELLOW SEAL**

**DN15 → DN300  
PN 16**

**Design**  
EN 13789

**End Connection**  
FLANGED EN 1092-2 / ISO 7005-2

**Body**  
GG25 CAST IRON

**Disc**  
DN15-100 - AISI 420  
DN125-300 - A105 STEEL

**Sealing**  
GRAPHITE

**Coating**  
INDUSTRIAL EPOXY



**2500  
Y-TYPE  
STRAINER**

**DN15 → DN600  
PN 16**

**Design**  
TS 11494

**End Connection**  
FLANGED EN 1092-2/ISO 7005-2

**Body**  
GGG50 DUCTILE IRON

**Filter**  
AISI 304

**Discharge Nut**  
MS 58 - BRASS

**Coating**  
ELECTROSTATIC POWDER EPOXY  
INDUSTRIAL EPOXY



# ACTUATORS



**3700  
GEARBOX**

**End Connection**  
EN ISO 5211

**Body**  
GG25 CAST IRON  
GGG40/50 DUCTILE IRON

**Coating**  
INDUSTRIAL EPOXY  
ELECTROSTATIC POWDER EPOXY



**3750  
PNEUMATIC  
ACTUATOR**

**SINGLE/DOUBLE ACTING**

**End Connection**  
EN ISO 5211

**Body**  
ALUMINIUM EXTRUSION  
OR ALUMINIUM CASTING

**Sealing**  
NBR

**Coating**  
ELECTROSTATIC POWDER EPOXY



**3770  
ELECTRIC  
ACTUATOR**

**QUARTER TURN**

**End Connection**  
EN ISO 5211

**Torque**  
50Nm → 2400Nm

**Type**  
ON/OFF or MODULATING

**Power Supply**  
110V/220V/380VAC  
110/24VDC



**3780  
ELECTRIC  
ACTUATOR**

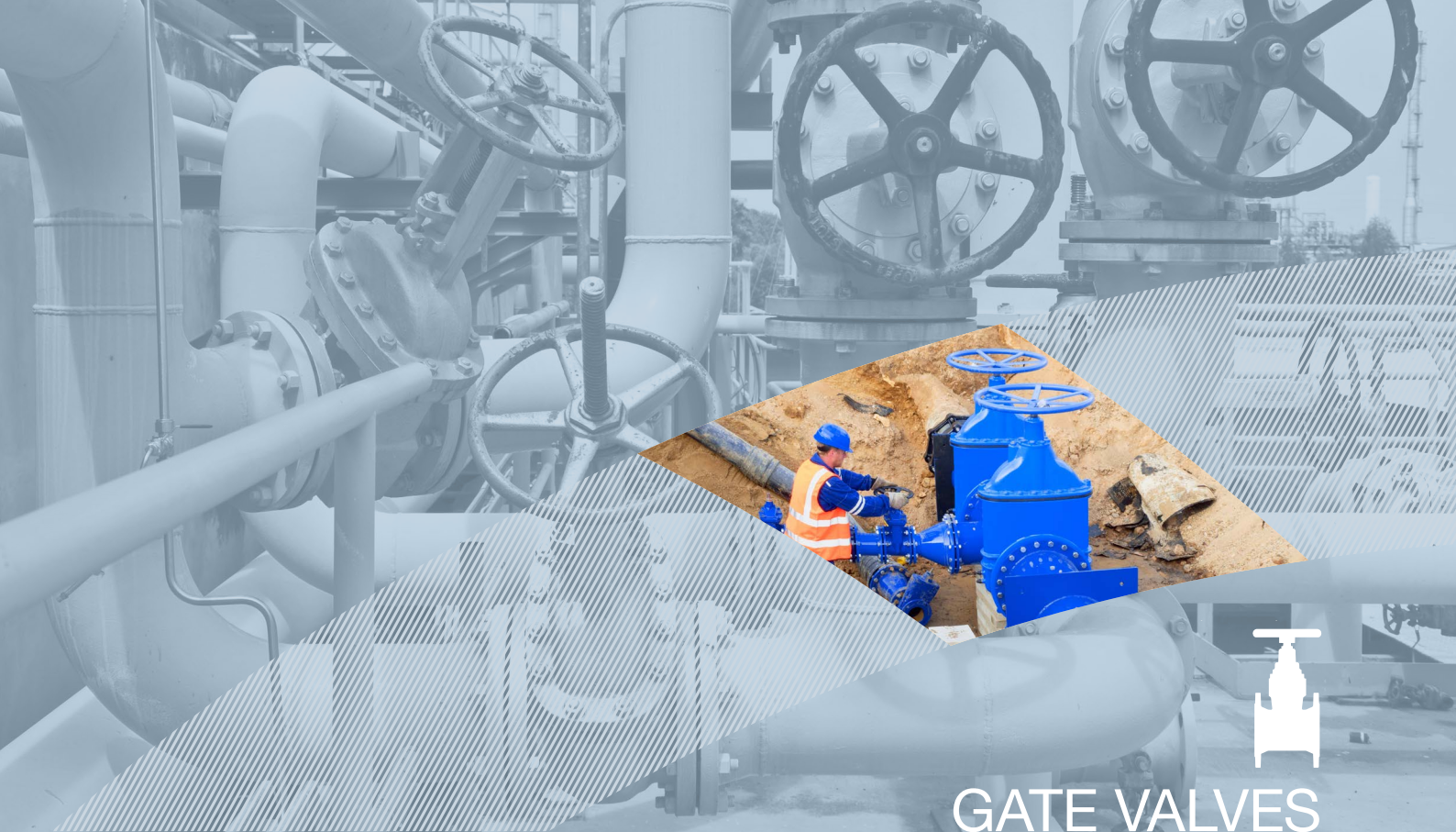
**MULTI TURN**

**End Connection**  
EN ISO 5211

**Torque**  
10Nm → 32000Nm

**Type**  
ON/OFF or MODULATING

**Power Supply**  
110V/220V/380VAC  
110/24VDC



# GATE VALVES



**6000  
GATE VALVE  
RESILIENT  
SEATED (F4)**

**DN40 → DN1000  
PN 10-16-25**

**Design**  
EN 1074

**End Connection**  
FLANGED EN 1092-2 / ISO 7005-2

**Body**  
GGG40-GGG50 DUCTILE IRON

**Gate**  
EPDM COATED DUCTILE IRON

**Stem**  
AISI 420 / 304 / 316

**Sealing**  
EPDM/NBR

**Coating**  
ELECTROSTATIC POWDER EPOXY



**6200  
RESILIENT  
SEATED  
GATE VALVE (F5)**

**DN40 → DN1000  
PN 10-16**

**Design**  
EN 1171 / EN 1074

**End Connection**  
FLANGED EN 1092-2 / ISO 7005-2

**Body**  
GGG40/50 DUCTILE IRON

**Gate**  
EPDM COATED DUCTILE IRON

**Stem**  
AISI 420 / 304 / 316

**Sealing**  
EPDM/NBR

**Coating**  
ELECTROSTATIC POWDER EPOXY



**6400  
GATE VALVE  
(FIRE)**

**DN50 → DN300  
300 PSI**

**Design**  
FM1120/1130, UL262 / AWWAC515

**End Connection**  
FLANGED TS EN 1092-2 / ISO 7005-2

**Body**  
GGG40/50 DUCTILE IRON

**Gate**  
EPDM COATED DUCTILE IRON

**Stem**  
AISI 420 / 304 STAINLESS STEEL

**Sealing**  
EPDM

**Coating**  
ELECTROSTATIC POWDER EPOXY



**6600  
GATE VALVE  
THREADED  
SERVICE VALVE**

**DN25 → DN50  
PN 16**

**Design**

EN 1171

**End Connection**

THREADED EN ISO 228-1

**Body**

GGG40/50 DUCTILE IRON

**Gate**

EPDM COATED DUCTILE IRON

**Stem**

AISI 420 / 304 / 316

**Sealing**

EPDM

**Coating**

ELECTROSTATIC POWDER EPOXY



**6000E  
GATE VALVE  
ELECTRIC  
ACTUATED**

**DN40 → DN1000  
PN 10-16-25**

**Design**

EN 1074

**End Connection**

FLANGED EN 1092-2 / ISO 7005-2

**Body**

GGG40/50 DUCTILE IRON

**Gate**

EPDM COATED DUCTILE IRON

**Stem**

AISI 420 / 304 / 316

**Sealing**

EPDM/NBR

**Coating**

ELECTROSTATIC POWDER EPOXY



**6700  
GATE VALVE  
METAL SEAT (F4)  
RISING STEM**

**DN40 → DN1000  
PN 10-16-25**

**Design**

EN 1171

**End Connection**

FLANGED EN 1092-2 / ISO 7005-2

**Body**

GGG50 DUCTILE IRON

**Gate**

GGG50 DUCTILE IRON

**Stem**

AISI 420

**Sealing**

EPDM

**Coating**

ELECTROSTATIC POWDER EPOXY



**6500  
KNIFE  
GATE VALVE  
RISING STEM**

**DN50 → DN1000  
PN 10**

**End Connection**

SEMI-LUG EN 1092-2 / ISO 7005-2

**Body**

GGG40/50 DUCTILE IRON

**Gate**

AISI 304  
AISI 316

**Stem**

AISI420

**Sealing**

NBR

**Coating**

ELECTROSTATIC POWDER EPOXY



**6550  
KNIFE  
GATE VALVE  
NON-RISING STEM**

**DN50 → DN1000  
PN 10**

**End Connection**

SEMI-LUG EN 1092-2 / ISO 7005-2

**Body**

GGG40/50 DUCTILE IRON

**Gate**

AISI 304  
AISI 316

**Stem**

AISI420

**Sealing**

NBR

**Coating**

ELECTROSTATIC POWDER EPOXY



**6500P  
KNIFE  
GATE VALVE  
PNEUMATIC**

**DN50 → DN800  
PN 10**

**End Connection**

SEMI-LUG EN 1092-2 / ISO 7005-2

**Body**

GGG40/50 DUCTILE IRON

**Gate**

AISI 304  
AISI 316

**Stem**

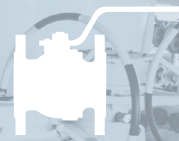
AISI420

**Sealing**

NBR

**Coating**

ELECTROSTATIC POWDER EPOXY



# BALL VALVES



## 1100 BALL VALVE

DN15 → DN300  
PN 10-16

### Design

TS 3148 / DIN3357

### End Connection

FLANGED EN 1092-2/ISO 7005-2

### Body

GG25 CAST IRON  
GGG40 / 50 DUCTILE IRON

### Ball

AISI 430 / 304 / 316

### Stem

AISI 420 / 304 / 316

### Sealing

TEFLON (PTFE)

### Coating

INDUSTRIAL EPOXY



## 1200 BALL VALVE

DN15 → DN300  
PN 16

### Design

TS 3148 / DIN3357

### End Connection

FLANGED EN 1092-2/ISO 7005-2

### Body

GGG40/50 DUCTILE IRON

### Ball

AISI 420 / 430 / 304 / 316

### Stem

AISI 420 / 304 / 316

### Sealing

TEFLON (PTFE)

### Coating

INDUSTRIAL EPOXY



## 1225 BALL VALVE

DN15 → DN250  
PN 25

### Design

EN 3148 / DIN3357

### End Connection

FLANGED EN 1092-2/ISO 7005-2

### Body

GGG50 DUCTILE IRON

### Ball

AISI 420 / 430 / 304 / 316

### Stem

AISI 420 / 304 / 316

### Sealing

TEFLON (PTFE)

### Coating

INDUSTRIAL EPOXY



## 1400 BALL VALVE

DN15 → DN150  
PN 25-40

### Design

EN 9809 / EN 331

### End Connection

FLANGED EN 1092-2/ISO 7005-2

### Body

GGG40 DUCTILE IRON

### Ball

AISI 420 / 430 / 304 / 316

### Stem

AISI 420 / 304 / 316

### Sealing

TEFLON (PTFE)

### Coating

INDUSTRIAL EPOXY



## 1440 BALL VALVE THREADED

DN15 → DN25  
PN 16-25-40

### Design

EN 331 / EN 1983

### End Connection

THREADED EN ISO 228-1

### Body

STEEL

### Ball

AISI 420 / 430 / 304 / 316

### Stem

AISI 420 / 304 / 316

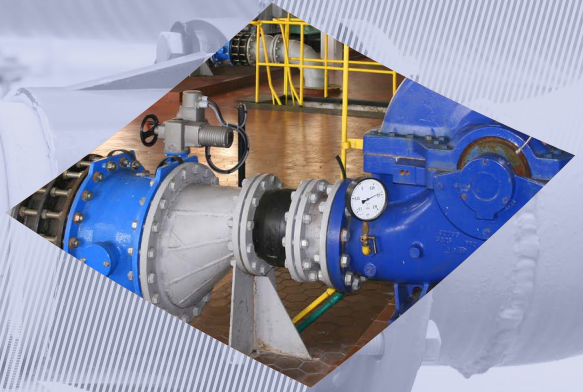
### Sealing

TEFLON (PTFE)

### Coating

INDUSTRIAL EPOXY

# EXPANSION JOINTS



## 5000 RUBBER EXPANSION JOINT

DN25 → DN600  
PN 16

**Design**  
EN 10879 / DIN 30680

**End Connection**  
FLANGED EN 1092-1/ISO 7005-1

**Body**  
FABRIC REINFORCED EPDM  
STEEL REINFORCED EPDM

**Flange**  
WCB CAST STEEL

**Sealing**  
EPDM/NBR

**Coating**  
GALVANISED  
INDUSTRIAL EPOXY



## 5070 RUBBER EXPANSION JOINT

DN15 → DN50  
PN 16

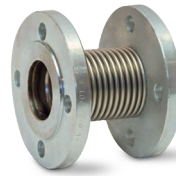
**Design**  
EN 10879 / DIN 30680

**End Connection**  
THREADED EN ISO 228-1

**Body**  
EPDM

**Flange**  
GGG40/50 DUCTILE IRON

**Coating**  
GALVANISED



## 5100 AXIAL EXPANSION JOINT

DN25 → DN250  
PN 16

**Design**  
EN 10880 / DIN30681

**End Connection**  
FLANGED EN 1092-1/ISO 7005-1  
WELDING END EN 12627

**Body**  
AISI 304 / 316 / 321

**Flange**  
ST 37 STEEL / AISI 304 / 316

**Liner (Inner)**  
AISI 304 / 316 / 321



## 5060 RUBBER EXPANSION JOINT

DN25 → DN300  
PN 16

**Design**  
EN 10879 / DIN 30680

**End Connection**  
FLANGED EN 1092-1/ISO 7005-1

**Body**  
FABRIC REINFORCED EPDM  
STEEL REINFORCED EPDM

**Flange**  
GGG40 DUCTILE IRON

**Sealing**  
EPDM NBR

**Coating**  
GALVANISED



## 5200 EXTERNALLY PRESSURIZED EXPANSION JOINT

DN25 → DN250  
PN 16

**Design**  
EN 10880 / DIN30681

**End Connection**  
FLANGED EN 1092-1/ISO 7005-1  
WELDING END EN 12627

**Bellow**  
AISI 304 / 316 / 321

**Inner Pipe**  
ST 37 STEEL / AISI 304 / 316

**Outer Pipe**  
ST 37 STEEL / AISI 304 / 316

**Coating**  
INDUSTRIAL EPOXY



## 5300 ANGULAR EXPANSION JOINT

DN25 → DN250  
PN 16

**Design**  
EN 10880 / DIN30681

**End Connection**  
FLANGED EN 1092-1/ISO 7005-1  
WELDING END EN 12627

**Bellow**  
AISI 304 / 316 / 321

**Welding End**  
ST 37 STEEL / AISI 304 / 316

**Inner Pipe**  
ST 37 STEEL / AISI 304 / 316

**Coating**  
INDUSTRIAL EPOXY



## 5400 DILATATION EXPANSION JOINT

DN25 → DN250  
PN 16

**Design**  
EN 10880 / DIN30681

**End Connection**  
FLANGED EN 1092-1/ISO 7005-1  
WELDING END EN 12627

**Body**  
ST 37 STEEL / AISI 304 / 316

**Flange**  
ST 37 STEEL / AISI 304 / 316

**Tie Rod**  
ST 37 STEEL / AISI 304 / 316

**Coating**  
INDUSTRIAL EPOXY



## 5500 VIBRATION EXPANSION JOINT

DN25 → DN250  
PN 16

**Design**  
EN 10880 / DIN30681

**End Connection**  
FLANGED EN 1092-1/ISO 7005-1

**Body**  
AISI 304 / 316 / 321

**Flange**  
ST 37 STEEL / AISI 304 / 316

**Coating**  
INDUSTRIAL EPOXY



# CHECK VALVES



**2350-2355  
CHECK VALVE  
DUAL**

**DN40 →DN600  
PN 16-25**

**Design**  
EN 16767

**End Connection**  
WAFFER TYPE EN 1092-1/ISO 7005-1

**Body**  
GG25 CAST IRON

**Disc**  
2350 - AISI 304  
2355 - DUCTILE IRON

**Spring**  
STAINLESS STEEL

**Sealing**  
EPDM

**Coating**  
ELECTROSTATIC POWDER EPOXY

**2250  
CHECK VALVE  
LIFT**

**DN15→DN250  
PN 16**

**Design**  
EN 16767

**End Connection**  
FLANGED EN 1092-2/ISO 7005-2

**Body**  
GG25 CAST IRON

**Disc**  
AISI 304

**Sealing**  
GRAPHITE

**Spring**  
STAINLESS STEEL

**Coating**  
INDUSTRIAL EPOXY

**2270  
CHECK VALVE  
SWING**

**DN50 →DN300  
PN 10-16**

**Design**  
EN 16767

**End Connection**  
FLANGED EN 1092-2/ISO 7005-2

**Body**  
GGG40/50 DUCTILE IRON

**Disc**  
RUBBER COATED ST.37 STEEL

**Sealing**  
EPDM

**Coating**  
ELECTROSTATIC POWDER EPOXY

**2270D  
CHECK VALVE SWING  
WITH COUNTER WEIGHT**

**DN50 →DN300  
PN 16**

**Design**  
EN 16767

**End Connection**  
FLANGED EN 1092-2/ISO 7005-2

**Body**  
GGG40/50 DUCTILE IRON

**Disc**  
GGG40/50 DUCTILE IRON

**Sealing**  
EPDM

**Coating**  
ELECTROSTATIC POWDER EPOXY



**2300 - 2330  
CHECK VALVE  
WAFER SWING**

**DN25 → DN700  
PN 16**

**Design**  
EN 14341

**End Connection**  
WAFER TYPE TS EN 1092-1/ISO 7005-1

**Body**  
2300 - AISI 304  
2330 - WCB CAST STEEL

**Disc**  
AISI 304

**Spring**  
STAINLESS STEEL

**Sealing**  
EPDM / NBR / VITON



**2370  
CHECK VALVE  
DISC**

**DN15 → DN100  
PN 16**

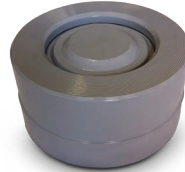
**Tests**  
EN 12266-1

**End Connection**  
WAFER TYPE TS EN 1092-1/ISO 7005-1

**Body**  
MS 58 - BRASS  
DN 125 - GGG50  
304 AISI FAF2372  
316 AISI FAF2373

**Disc**  
AISI 304

**Spring**  
STAINLESS STEEL



**2371  
CHECK VALVE  
DISCO - SPHERO**

**DN40 → DN250  
PN 16**

**Tests**  
EN 16767

**End Connection**  
WAFER TYPE TS EN 1092-1 / ISO  
7005-1

**Body**  
GGG40/50 CAST IRON

**Disc**  
GGG40/50 CAST IRON

**Spring**  
STAINLESS STEEL



**2390  
NOZZLE  
CHECK VALVE**

**DN50 → DN300  
PN 10-16**

**Design**  
EN 12334

**End Connection**  
FLANGED EN 1092-2 / ISO 7005-2

**Body**  
GG25 CAST IRON

**Spring**  
SS316

**Stem**  
AISI 420

**Sealing**  
NBR

**Coating**  
ELECTROSTATIC POWDER EPOXY



**2280  
TILTING CHECK  
VALVE**

**DN100 → DN1600  
PN 10-16-25**

**Design**  
EN 16767

**End Connection**  
FLANGED EN 1092-2/ISO 7005-2

**Body**  
GGG40/50 DUCTILE IRON

**Disc**  
GGG40/50 DUCTILE IRON

**Sealing**  
EPDM

**Coating**  
THERMOPLASTIC POWDER EPOXY  
ELECTROSTATIC POWDER EPOXY



**2280D  
TILTING CHECK VALVE  
HYDRAULIC BRAKE**

**DN200 → DN1600  
PN 10-16-25**

**Design**  
EN 16767

**End Connection**  
FLANGED EN 1092-2/ISO 7005-2

**Body**  
GGG40/50 DUCTILE IRON

**Disc**  
GGG40/50 DUCTILE IRON

**Sealing**  
EPDM

**Coating**  
THERMOPLASTIC POWDER EPOXY  
ELECTROSTATIC POWDER EPOXY



**2290  
BALL  
CHECK VALVE**

**DN40 → DN800  
PN 10-16**

**Design**  
EN 16767

**End Connection**  
FLANGED EN 1092-2 / ISO 7005-2

**Body**  
GGG40/50 DUCTILE IRON

**Ball**  
NBR COATED STEEL

**Sealing**  
NBR

**Coating**  
ELECTROSTATIC POWDER EPOXY



**2295  
BALL CHECK  
VALVE THREADED**

**DN25 → 80  
PN 10-16**

**Design**  
EN 16767

**End Connection**  
THREADED EN 228-1

**Body**  
GGG40/50 DUCTILE IRON

**Ball**  
NBR COATED STEEL

**Sealing**  
NBR

**Coating**  
ELECTROSTATIC POWDER EPOXY



# AIR RELEASE VALVES



## 7310 SINGLE ORIFICE ARV

DN50 → DN200  
PN 16

**End Connection**  
FLANGED EN 1092-2 / ISO 7005-2

**Body**  
GGG40/50 DUCTILE IRON

**Ball**  
POLYETHYLENE

**Coating**  
INDUSTRIAL EPOXY



## 7320 DOUBLE ORIFICE ARV

DN50 → DN100  
PN 16

**End Connection**  
FLANGED EN 1092-2 / ISO 7005-2

**Body**  
GGG40/50 DUCTILE IRON

**Ball**  
POLYETHYLENE

**Coating**  
INDUSTRIAL EPOXY



(DN 50-65-80 mm) (DN 100-150-200-300 mm)

## 7330 DYNAMIC ARV

DN50 → DN300  
PN 16-25

**End Connection**  
FLANGED EN 1092-2 / ISO 7005-2

**Body**  
GGG40/50 DUCTILE IRON

**Sealing**  
EPDM

**Filter**  
AISI 430 / 304

**Coating**  
ELECTROSTATIC POWDER EPOXY

**Working Pressure Range**  
0.1 - 1 bar / 1 - 16 bar



## 7340 KINETIC ARV

DN50 → DN300  
PN 16-25

**End Connection**  
FLANGED EN 1092-2 / ISO 7005-2

**Body**  
GGG40/50 DUCTILE IRON

**Sealing**  
EPDM

**Filter**  
AISI 430 / 304

**Coating**  
ELECTROSTATIC POWDER EPOXY

**Working Pressure Range**  
0.1 - 1 bar / 1 - 16 bar



## 7350 COMBINATION ARV

DN50 → DN80  
PN 16

**End Connection**  
FLANGED EN 1092-2 / ISO 7005-2

**Body**  
GGG40/50 DUCTILE IRON

**Sealing**  
EPDM

**Filter**  
AISI 430 / 304

**Coating**  
ELECTROSTATIC POWDER EPOXY

**Working Pressure Range**  
0.1 - 1 bar / 1 - 16 bar



## 7360 THREADED ARV

DN15 → DN50  
PN 16-25-40

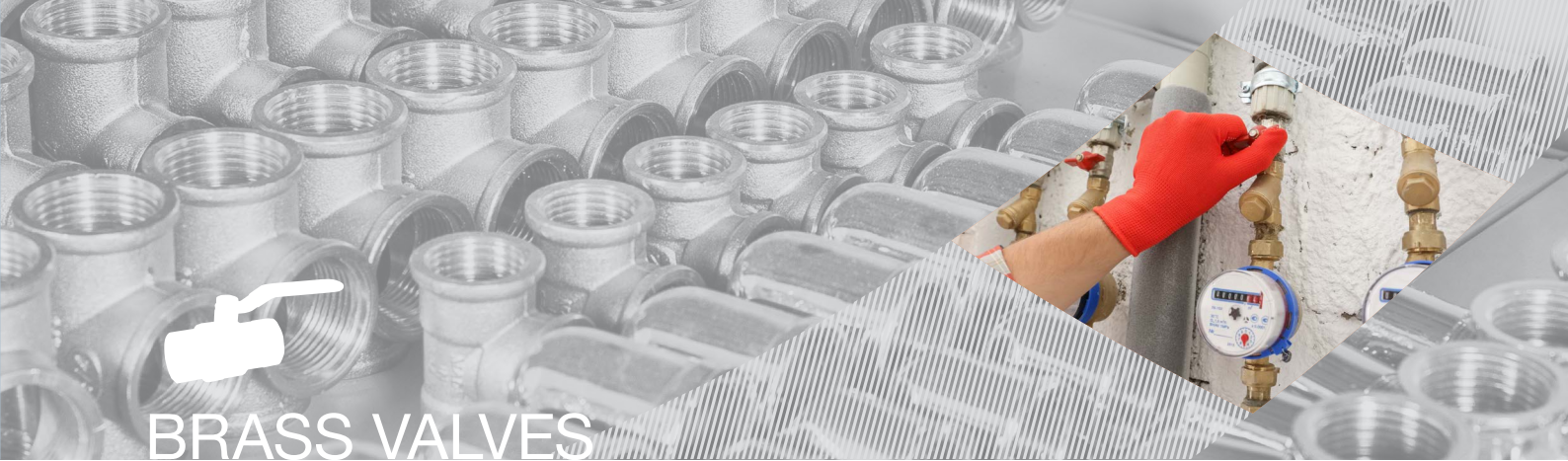
**End Connection**  
THREADED EN ISO 228-1

**Body**  
GGG40/50 DUCTILE IRON

**Sealing**  
EPDM

**Coating**  
ELECTROSTATIC POWDER EPOXY

**Working Pressure Range**  
0.1 - 1 bar / 1 - 16 bar



# BRASS VALVES



**4000 BALL VALVE**

**DN15 → DN100  
PN 25**

**Design**  
TSE CEN - TS 13547

**End Connection**  
THREADED EN ISO 228-1

**Body**  
Brass - CuZn40Pb2



**4100 GAS BALL VALVE**

**DN15 → DN50  
PN 10**

**Design**  
EN 331

**End Connection**  
THREADED EN ISO 228-1

**Body**  
Brass - CuZn40Pb2



**4010 BALL VALVE (MALE/FEMALE)**

**DN15 → DN20  
PN 25**

**End Connection**  
THREADED

**Body**  
Brass - CuZn40Pb2



**4020 BALL VALVE WITH ADAPTOR (MALE/FEMALE)**

**DN20 → DN32  
PN 25**

**End Connection**  
THREADED

**Body**  
Brass - CuZn40Pb2



**4030/4040 MINI BALL VALVE**

**16 mm (Male/Female)  
PN 10**

**End Connection**  
THREADED

**Body**  
Brass - CuZn40Pb2



**4600 CALORIMETERS VALVE**

**DN25 (with/without union)**

**End Connection**  
THREADED

**Body**  
Brass - CuZn40Pb2



**4200 STRAINER**

**DN15 → DN50  
PN 16**

**End Connection**  
THREADED EN ISO 228-1

**Body**  
Brass - CuZn40Pb2



**4300 SPRING CHECK VALVE**

**DN15 → DN80  
PN 16**

**End Connection**  
THREADED EN ISO 228-1

**Body**  
Brass - CuZn40Pb2



**4350 SWING CHECK VALVE**

**DN15 → DN50  
PN 16**

**End Connection**  
THREADED EN ISO 228-1

**Body**  
Brass - CuZn40Pb2

# HYDRANTS - OTHER PRODUCTS



**3960  
FLANGE  
ADAPTOR**

**DN40 → DN600  
PN 16**

**End Connection**  
FLANGED EN 1092-2/ISO 7005-2

**Body**  
GG25 CAST IRON  
GGG40/50 DUCTILE IRON

**Studs / Nuts**  
8.8 GALVANISED STEEL

**Sealing**  
EPDM

**Coating**  
INDUSTRIAL EPOXY  
ELECTROSTATIC POWDER EPOXY



**3970  
COUPLING**

**DN40 → DN600  
PN 16**

**Body**  
GG25 CAST IRON  
GGG40/50 DUCTILE IRON

**Studs / Nuts**  
8.8 GALVANISED STEEL

**Sealing**  
EPDM

**Coating**  
INDUSTRIAL EPOXY  
ELECTROSTATIC POWDER EPOXY



**7200  
FOOT VALVE**

**DN40 → DN400  
PN 16**

**End Connection**  
FLANGED EN 1092-2/ISO 7005-2

**Body**  
GGG40/50 DUCTILE IRON

**Disc**  
GGG40/50 DUCTILE IRON

**Stem**  
AISI420/304/316

**Filter**  
AISI304



**7100  
HYDRANT**

**DN80 → DN100  
PN 16**

**Design**  
EN 14384

**End Connection**  
FLANGED EN 1092-2/ISO 7005-2

**Body**  
GGG40/50 DUCTILE IRON

**Outlet**  
ALUMINIUM - BRASS

**Stem**  
AISI 420

**Sealing**  
EPDM

**Coating**  
INDUSTRIAL EPOXY  
ELECTROSTATIC POWDER EPOXY



**7150  
HYDRANT  
UNDERGROUND**

**DN80 → DN100  
PN 16**

**Design**  
EN 14339

**End Connection**  
FLANGED EN 1092-2/ISO 7005-2

**Gövde**  
GGG40/50 DUCTILE IRON

**Outlet**  
ALUMINIUM - BRASS

**Stem**  
AISI 420

**Sealing**  
EPDM

**Coating**  
INDUSTRIAL EPOXY  
ELECTROSTATIC POWDER EPOXY



**7250  
EXTENSION SPINDLE  
SURFACE BOX**

**0,5m → 4m**

**Body**  
GG25 CAST IRON  
GGG40/50 DUCTILE IRON

**Cover**  
GG25 CAST IRON  
GGG40/50 DUCTILE IRON

**Stem**  
ST37 STEEL

**Spindle Cover**  
PE (POLYETHYLENE)



# CONTROL VALVES



## 7410 PRESSURE REDUCING CONTROL VALVES

DN40 → DN300  
PN 16-25

The metal pilot is made of brass material.

All metal fittings are made of brass material.

### Body

GGG40 DUCTILE IRON

### Coating

ELECTROSTATIC POWDER EPOXY

## 7440 PRESSURE SUSTAINING PRESSUREREDUCING CONTROL VALVES

DN40 → DN300  
PN 16-25

The metal pilot is made of brass material.

All metal fittings are made of brass material.

### Body

GGG40 DUCTILE IRON

### Coating

ELECTROSTATIC POWDER EPOXY

## 7460 FLOAT LEVEL CONTROL VALVE

DN40 → DN300  
PN 16-25

The metal pilot is made of brass material.

All metal fittings are made of brass material.

### Body

GGG40 DUCTILE IRON

### Coating

ELECTROSTATIC POWDER EPOXY

## 7480 SURGE ANTICIPATING CONTROL VALVE

DN40 → DN300  
PN 16-25

The metal pilot is made of brass material.

All metal fittings are made of brass material.

### Body

GGG40 DUCTILE IRON

### Coating

ELECTROSTATIC POWDER EPOXY

## 7520 SOLENOID CONTROL VALVE

DN40 → DN300  
PN 16-25

The metal pilot is made of brass material.

All metal fittings are made of brass material.

### Body

GGG40 DUCTILE IRON

### Coating

ELECTROSTATIC POWDER EPOXY



## 7520Y Y TYPE SOLENOID CONTROL VALVE

DN40 → DN500  
PN 16-25

The metal pilot is made of brass material.

All metal fittings are made of brass material.

### Body

GGG40 DUCTILE IRON

### Coating

ELECTROSTATIC POWDER EPOXY

## 7440Y Y TYPE PRESSURE SUSTAINING PRESSUREREDUCING CONTROL VALVES

DN40 → DN500  
PN 16-25

The metal pilot is made of brass material.

All metal fittings are made of brass material.

### Body

GGG40 DUCTILE IRON

### Coating

ELECTROSTATIC POWDER EPOXY

## 7460Y Y TYPE FLOAT LEVEL CONTROL VALVE

DN40 → DN500  
PN 16-25

The metal pilot is made of brass material.

All metal fittings are made of brass material.

### Body

GGG40 DUCTILE IRON

### Coating

ELECTROSTATIC POWDER EPOXY

## 7480Y Y TYPE SURGE ANTICIPATING CONTROL VALVE

DN40 → DN500  
PN 16-25

The metal pilot is made of brass material.

All metal fittings are made of brass material.

### Body

GGG40 DUCTILE IRON

### Coating

ELECTROSTATIC POWDER EPOXY

## 7520Y Y TYPE SOLENOID CONTROL VALVE

DN40 → DN500  
PN 16-25

The metal pilot is made of brass material.

All metal fittings are made of brass material.

### Body

GGG40 DUCTILE IRON

### Coating

ELECTROSTATIC POWDER EPOXY